



July 17, 18, 19, 2026 ~ *Final Confirmation*

Trial Location: On Point Elite (OPE) Dog Sports ~ 3840 WI-60, Slinger WI 53086

Building hours: 7:00am - 30 minutes after last class is completed

Check in at 7:30am, General Briefing at 7:45am, First blind will load at 8:00am

Class briefings will be held for Instinct and Novice only. Exhibitors are expected to know the rules. Rulebooks are available on site.

Emergency (24 hr) Veterinary Services:

WVRC - Ozaukee (262) 546-0249

<https://www.wvrcwi.com/locations/ozaukee>

12800 North Port Washington Road, Mequon, WI, 53097
(East on WI-60 16 miles to I-43S to Mequon Rd, West 1 block)



General Information

- Indoor crating is available. Please put a mat under your crates to protect the flooring. Vehicle crating is allowed.
- Summer Heat: While we don't have central A/C at OPE. We have an air conditioning unit running on the training/crating side, along with multiple fans positioned throughout both sides of the building (including in the blinds). We encourage you to bring along your own battery-operated fans, cooling gear for your dogs, and of course, don't forget plenty of water!
- Crates may be left overnight if competing the next day. We are not responsible for items left overnight.
- There is no indoor bathroom available during this event (our bathrooms are currently under construction.) We have clean outdoor portable toilets on site. There are also *many* gas stations and restaurants within a 3-5 minute drive that also have lovely restrooms available for your use, should you not be a "porta-potty" person.
- Designated dog exercise areas are located to the south and west of the building and parking lot. Look for waste bag stations. To respect our neighbors, please stay within Barn Hunt Grounds when walking dogs.
- Please pick up after your dogs and dispose of dog waste in appropriate containers outside of the building. Any exhibitor failing to follow these rules may be excused without benefit of refund if the Trial Committee deems the exhibitor to be in violation of this requirement per BHA regulations.
- Dogs who excessively pee on bales while in the ring will be asked to pay for soaked bales. Price is \$5 - \$10
- Flexi (Retractable) leashes are not allowed on trial grounds
- Smoking and/or vaping are not allowed in the building or on show grounds. You may smoke in your vehicle.
- Volunteers are very important to any Barn Hunt Event. We want everyone to have a pleasant experience in Barn Hunt while at the same time running the event efficiently and smoothly. All volunteers will receive complimentary lunch and refreshments as well as a punch card for future trial entries. The best way to learn is to volunteer! Please contact a committee member to volunteer for this trial or offer your services when workers are called for. Many jobs do not require previous training or experience. We appreciate you!!

Trial Information

- These trials will be held indoors on rubber mats over concrete.
- Blinds are 13 x 16 (#1) and 10 x 20 (#2) curtained areas, indoors.
- 6 dogs per blind in Instinct, Novice and Open. 5 dogs per blind in Senior, Master and Crazy 8's.
- Judge of Record and Event Official dogs may be judged prior to the official start time or as the first blind(s) of the Event.
- Move-ups are allowed from Trial to Trial and Day to Day. See the Secretary to initiate a move-up.

Trial Chair: Aubrey LaCrosse abu.lax.01@gmail.com 920-344-0290

Trial Secretary: Denise Nelson dnelsonjeweler@yahoo.com 414-405-2061
2332 S 64th St, West Allis, WI 53219

Trial Committee: Denise Nelson, Aubrey LaCrosse, Emily Monroe, Arica Meidl
Liz Groehler, Lydia Meyer, Ella Jors, Casey Benzing

Chief Rat Wrangler: Bernadette Stahlkopf

Chief Course Builder: Arica Meidl

Judges:

Cathy Hoese BHAJ-197A Mayer MN
 Andrea Kulju BHAJ - 279A Longville, MN
 Donna Nisleit BHAJ-247A Juneau WI (RBJ)
 Denise Nelson BHAJ-270A West Allis WI (RBJ)

TRIAL SCHEDULE

Building Opens: 7:00 AM
 Check-in: 7:30 AM
 General Briefing: 7:45 AM
 First Dogs load the Blind: 8:00 AM

Running Order and Class Counts*

Friday July 17				Saturday July 18				Sunday July 19			
Ring 1 - Andrea		Ring 2 - Cathy		Ring 1 - Cathy		Ring 2 - Andrea		Ring 1 - Andrea		Ring 2 - Cathy	
Trial 1	Trial 2	Trial 1	Trial 2	Trial 1	Trial 2	Trial 1	Trial 2	Trial 1	Trial 2	Trial 1	Trial 2
Master - 20	Master - 21	Instinct - 0		Master - 25	Master - 25	Instinct - 0		Master - 29	Master - 29	Instinct - 1	
		Novice - 9	Novice - 8			Novice - 8	Novice - 7			Novice - 4	Novice - 3
		Open - 5	Open - 6			Open - 4	Open - 4			Open - 3	Open - 3
		Senior - 5	Senior - 5			Senior - 7	Senior - 7			Senior - 4	Senior - 4
		CZ8 - 13	CZ8 - 6			CZ8 - 17	CZ8 - 7			CZ8 - 13	CZ8 - 6

*This is the running order for each ring/judge. We cannot provide exact class start times because of the fluid nature of the event; rather, in Barn Hunt we use the number of runs in each class to estimate start times. To guesstimate approximate class times, plan on 20 minutes per blind in Novice/Open/Senior/CZ8 and 30 minutes per blind in Master. PLEASE keep in mind there are no guarantees, and the event may run faster/slower than anticipated due to late entries, withdrawals, move-ups, etc. Rings will not be held for missing exhibitors. **Don't arrive late and miss your run!***

Classes will be run in the following order each day:

Ring 1: Master Trial 1 followed by Master Trial 2

Ring 2: Instinct, Novice Trial 1, Novice Trial 2, Open Trial 1, Open Trial 2, Senior Trial 1, Crazy 8 Trial 1, Senior Trial 2, Crazy 8 Trial 2

*Class/blind counts will change throughout the weekend depending on move-ups, withdrawals, etc.
 Up to 6 competitors per blind in Instinct/Novice/Open; Up to 5 competitors per blind in Senior/Master/CZ8.

Any Judge of Record at this event may be used in any ring.
 Qualifying scores will show the Judge who designed the course.

A LUNCH BREAK WILL BE TAKEN EACH DAY AT THE JUDGES' DISCRETION.**EXHIBITOR INFORMATION**

This is a two-ring trial and there may be conflicts. Due to course changes, Ring 2 will take precedence. **All changes to blinds must be approved by the Trial Secretary or Blind Steward — please do not make any changes to the boards without permission.** You will be moved to a different blind if you're running in one ring when your blind loads for the other ring.

Please check in by placing a check mark by your dog's name on the Blind Board. Please also make note of your place in the running order.

Exhibitors are responsible for being ready to go to the blind when it is their turn to run. The judge need not wait for any dog holding up a class. The club has no obligation or responsibility to call or locate dogs that are not brought to the blind when required.

Bitch in Season (BIS) - BIS will crate and potty in designated areas. They will run with panties on at the end of any class they are entered in. If bringing a BIS, please inform the Trial Secretary ASAP prior to the trial and inform all exhibitors at the General Briefing. Remember your BIS must wear panties at all times at the show site except when being taken out to potty. We will direct you to the BIS crating and potty area. Please see the secretary before unloading your BIS.

Animal Safety: The safety of the dogs and the rats are our primary concern. By entering this trial, exhibitors acknowledge that they are familiar with the rules and regulations of this sport, and that their dogs are familiar with and physically able to perform all course elements. Current copies of the BHA rulebooks can be found at the secretary table as well as online <https://barnhunt.com/barnhuntrules.html>

It is expressly understood that exhibitors alone are responsible for the behavior of their dog(s) and/or children. Any exhibitor whose dog(s) and/or children create unnecessary disturbances or repeatedly engage in unsafe or disruptive behavior may, at the discretion of the Trial Committee, be asked to leave with no refund of any fees paid.

Results/Ribbons: Results will be posted in a designated area and ribbons placed on the table when they are ready. Please check the labels on the back to make sure you are taking the correct ribbons. If you earn a title, please notify the scribe and mark the sheet at the secretary table so we may prepare your title ribbon. Title ribbons will be prepared after class results and qualifying/placement ribbons are posted.

Move-ups: If you need to do a move up (or down or laterally to B class), please fill out the form at the Secretary table. If it's a same-day, trial-to-trial move-up, please also let the Trial Secretary know verbally if possible. Move-ups are allowed all days both trial-to-trial and day-to-day.

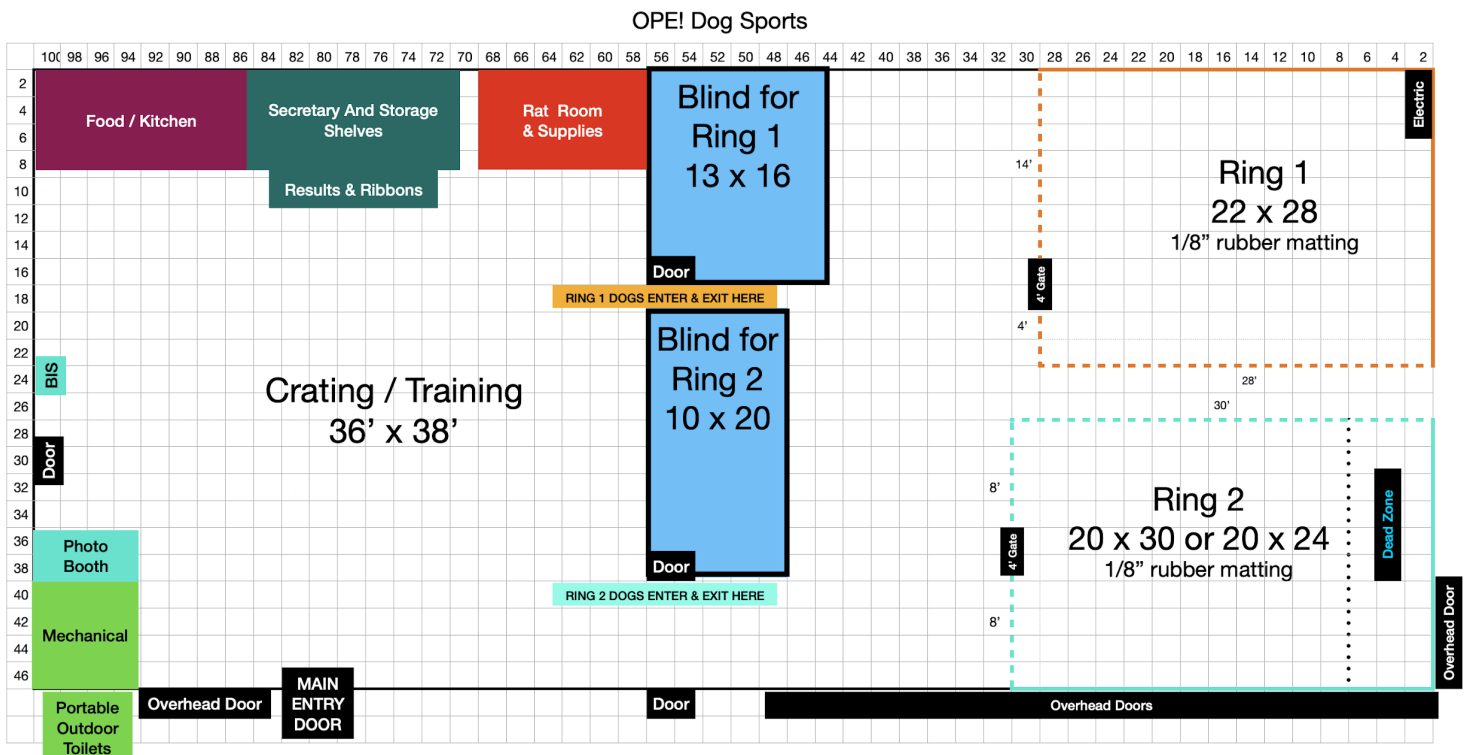
Photo Area: We will have a photo area in the crating room for self-serve ribbon photos. Be sure to tag Cudahy Kennel Club and OPE Dog Sports if you post your pictures on Facebook!

Professional Photographer: There will be a professional photographer on site for this event. Watch for information at the ribbon table, on Facebook and in the results email that you'll receive after the event.

Donations: We have two donation jars at OPE - one to support training sessions at OPE for shelter dogs, and one to support German Shorthaired Pointer rescue. The donation jars are located on the shelves by the treats for sale.

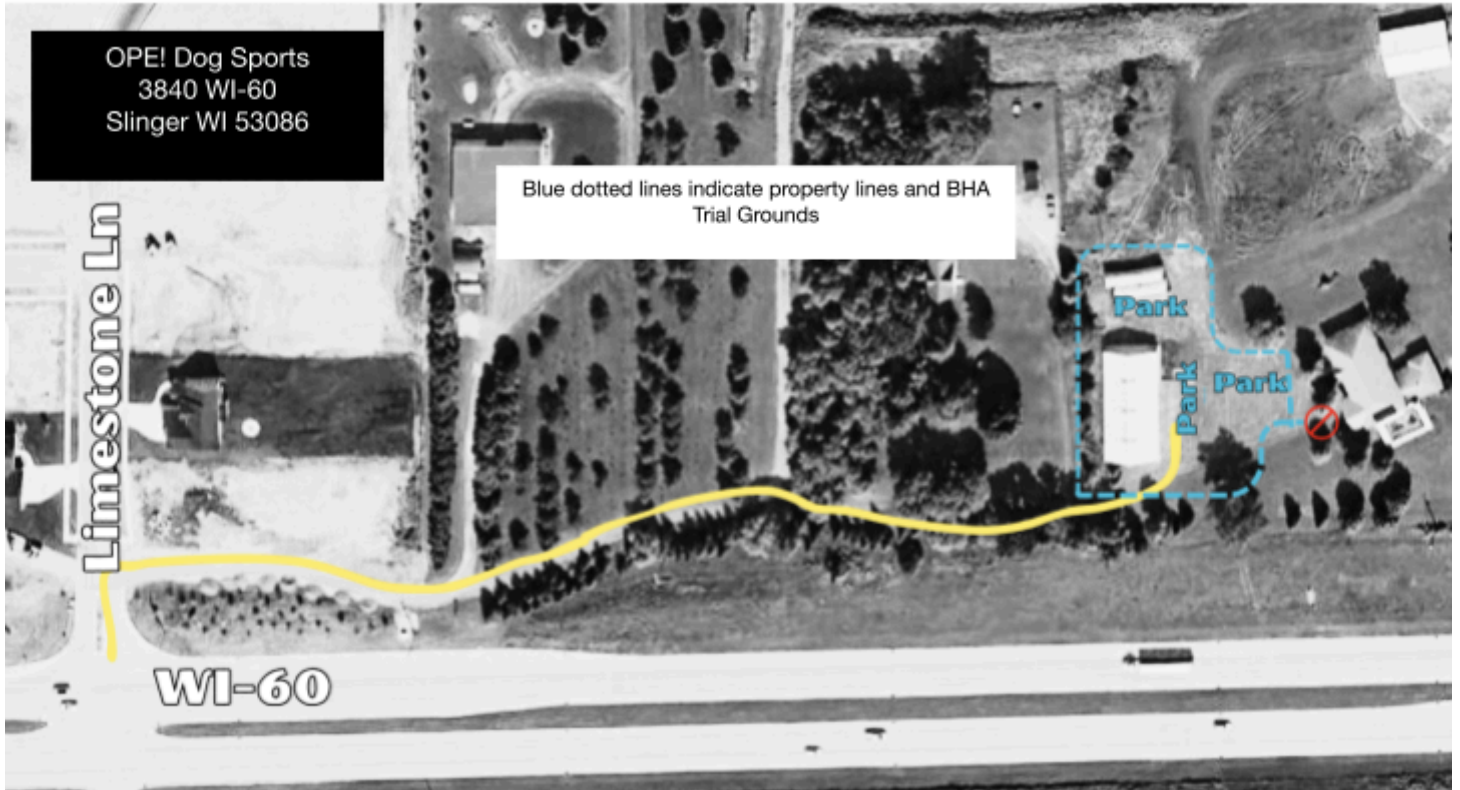
Merchandise: OPE t-shirts and sweatshirts are for sale in the brown cabinet near the front door. Payments can be made with cash or check to the secretary table, the payment box on the wall or electronically via Venmo.

If you have any questions or concerns, don't hesitate to talk to the Trial Chairperson, Secretary or one of the Committee members. We are all here because we love playing this game with our dogs. If there is an issue, we want to address it!



Directions: OPE Dog Sports is located on the north side of WI-60 between I-41 and US-45. Turn north onto Limestone Lane, then **immediately** turn right onto the long shared driveway. Follow the driveway back through the brick pillars to our building on the left and large blacktop parking lot. For detailed directions visit <https://www.opedogsports.com/map-and-directions>

Parking: There is ample parking on the property. There are handicapped parking stalls in front with easy accessibility to the building. Parking is allowed on the asphalt paved parking lot on the east and north side of the OPE! building. Do not park on the grass. Please don't block driveway access for the house to the east.



Due to summer road construction, please visit our website for the latest ramp and road closures that may affect your travel time.

[opedogsports.com](https://www.opedogsports.com)